



IT TAKES YOU

As part of this great community, we all share a responsibility for our future. If everyone in Mower County does not have access to health care, a quality education, is not financially stable, or does not have their basic needs met, we all suffer. Critical issues such as these carry an overwhelming sense of urgency. When you donate to the United Way, you join thousands of others who care about the same thing: making sure everyone in our community has a chance for a better life. Your investment will make a significant difference in helping to rewrite the stories for those most in need. Thank you for supporting our community today to ensure a better tomorrow for all. We're all in this together!

WHAT IS THE UNITED WAY?

- A collective impact organization that evaluates community needs and fundraises to invest in the programs that address those needs
- Currently funding 35 programs through 25 local nonprofits (partner agencies) that are proven to make a difference in the areas of education, income, health, and basic needs
- The United Way agency network works closely and collaboratively to ensure we operate effectively, efficiently, and in a way that makes the biggest impact possible

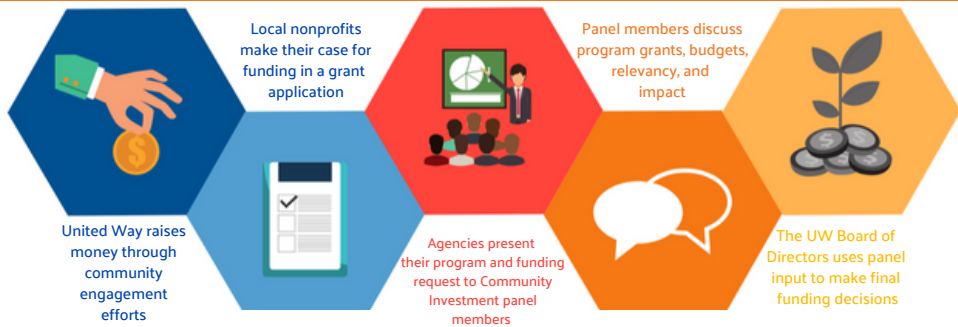
HOW DOES MY DONATION MAKE AN IMPACT?

Community contributions fund programs that serve the people of Mower County. No other single organization meets the broad range of needs addressed by United Way, with one donation being stretched to more than 20 local agencies. The money that is raised here stays here, so your gift is guaranteed to help your neighbors in the community we all call home.



WHERE THE MONEY GOES: INVESTING IN A BRIGHTER FUTURE & STRONGER COMMUNITY

Community Investment volunteers, who are donors and community members just like you, play a pivotal role in funding decisions. A competitive allocation process identifies which organizations have the potential to make the greatest difference in our community and what resources are needed to effect change. Here's an overview:



VISIT WWW.UWMOWER.ORG/OUR-IMPACT TO LEARN MORE ABOUT WHY YOUR GIFT MATTERS.

